

22' x 70'

2- Storey Shop Office
双层店铺办公楼

SPECIFICATION 建筑结构

Structure	Reinforced concrete frame	
Wall	Brickwall / RC wall	
Roof	Metal deck roofing	
Ceiling	Asbestos free flat sheet ceiling (1st floor) Skim coating	
Roof Structure	Metal trusses	
Windows	Aluminum frame windows	
Doors	Zincalume Roller Shutter M.S Gate PVC door T&G timber door Fire door	
Floor Finishes	Baths Others	- Ceramic tiles - Cement render
Wall Finishes	Baths Others	- 1500mm high glazed wall tiles - Cement plaster
Painting	Interior walls Exterior walls	- Emulsion paint - Weather resistant paint
Sanitary Installation	Water Closet (sitting type) Water Closet (squatting type) Wash Basin Kitchen Sink Shower	- 2 nos. - 2 nos. - 4 nos. - 1 no. - 2 nos.
Electrical Installation	Lighting points Power points Fan points Telephone points	- 26 nos. - 6 nos. - 4 nos. - 2 nos.

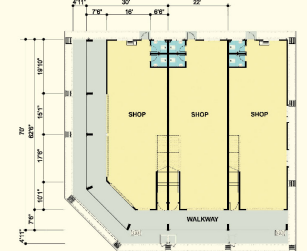


FREEHOLD
永久地契

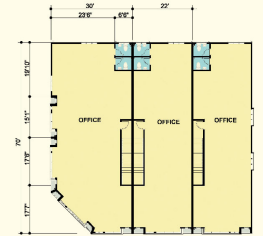


*The New Commercial hub
in Bertam*

Floor Plan 平面图



Ground Floor



First Floor

*Practical design,
great for businesses*

Whether you are just establishing your business or relocating,
Taman Bertam Putra is the ideal choice:
| Freehold | 22' x 70' | Built-up area 3,080 sq.ft. |

WHY INVEST IN TAMAN BERTAM PUTRA SHOP OFFICE
投资于TAMAN BERTAM PUTRA的理由

Fronting mainroad
面向大马路。

Located along lebuhtraya SPA
位于SPA 高速公路之间。

Surrounding developments include the prospering Cheng area, Bukit Rambai Industrial Estate, Sungai Udang Army Camps and Petronas Refinery.
周围围绕着繁荣的Cheng巷区、Bukit Rambai工业区、Sungai Udang军管和Petronas炼油厂。

Modern architectural design with flexi-space suited for various businesses
现代化的建筑设计，灵活的空间运用，适用于各种行业。

Excellent Returns of Investment
高投资回报